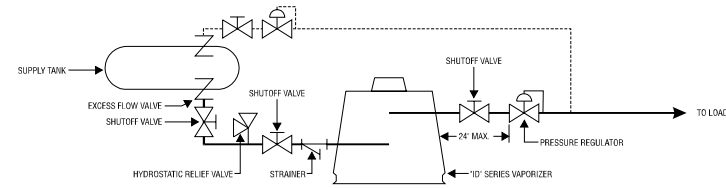


## Principal Features and Operating Characteristics



### NOTES:

- Equipment, piping and installation must be in accordance with provisions of NFPA 58 and all applicable state, provincial and local codes.
- Liquid pump may be required to provide sufficient pressure to inlet of vaporizer during conditions of low tank pressure.
- Outlet pressure regulator must be mounted at or above centerline of vaporizer outlet and as close as practical.
- Do not install dripleg or other liquid trap upstream of outlet pressure regulator.
- Regulator outlet pressure must be adjusted to a pressure below the vapor pressure of the saturated LP-Gas at lowest operating temperature or vapor may re-liquefy in downstream piping.
- Liquid piping system must allow for occasional reverse flow toward supply tank to prevent excessive pressure during operation.

### Selection Chart

If your Peak Load Requirements are up to (1)				Approximate Water Capacity		Ransome Model
GAL/Hr Propane	KG/Hr	Thousands of CF/Hr	Millions of BTU/HR	Gallon	Liter	
500	960	18.3	45.8	300	1135	<b>ID500</b>
750	1440	27.5	68.8	400	1514	<b>ID750</b>
1000	1920	36.6	91.7	825	3123	<b>ID1000</b>
1500	2880	54.9	138	850	3217	<b>ID1500</b>
2000	3840	73.3	183	1380	5223	<b>ID2000</b>
2500	4800	91.6	229	1750	6624	<b>ID2500</b>
3000	5760	109.9	275	1900	7192	<b>ID3000</b>
4000	7680	146.6	367	2975	11260	<b>ID4000</b>
5000	9600	183.2	458	3500	13248	<b>ID5000</b>
6000	11520	219.8	550	4600	17411	<b>ID6000</b>

(1) Units may be paralleled to achieve greater capacities.

NOTE: For usage with other liquified gases, consult factory sizing information. (i.e. C3H6, NH3, SO2, C12)

### Standard Specifications

Standard units are built to Factory Mutual specifications, factory tested and calibrated, ready for use. Capacities are based on liquid inlet temperature of 20 degrees F and vapor outlet temperature of 100 degrees F, without use of pump, using HD-5 spec. **propane** (butane capacity available upon request).

### Warranty

Ransome Manufacturing, 3495 South Maple Avenue, Fresno, California, warrants to all parties all equipment manufactured and sold by it to be free from defects in material or workmanship under normal use and service, when installed and used in accordance with all applicable state and local codes, regulations and laws or in accordance with National Fire Protection Pamphlet 58. Ransome Manufacturing agrees to repair or replace any equipment which its examination reveals to have been defective due to faulty workmanship or material, if returned to factory, transportation charges prepaid. Deviations from recommended applications, system design, installation and service practices, as well as deterioration or wear due to foreign materials or contamination present in LP-Gas or air shall be considered as abuse and render this warranty void.

This warranty applies for a period of one year from date of installation, but not more than eighteen months after shipment from factory.

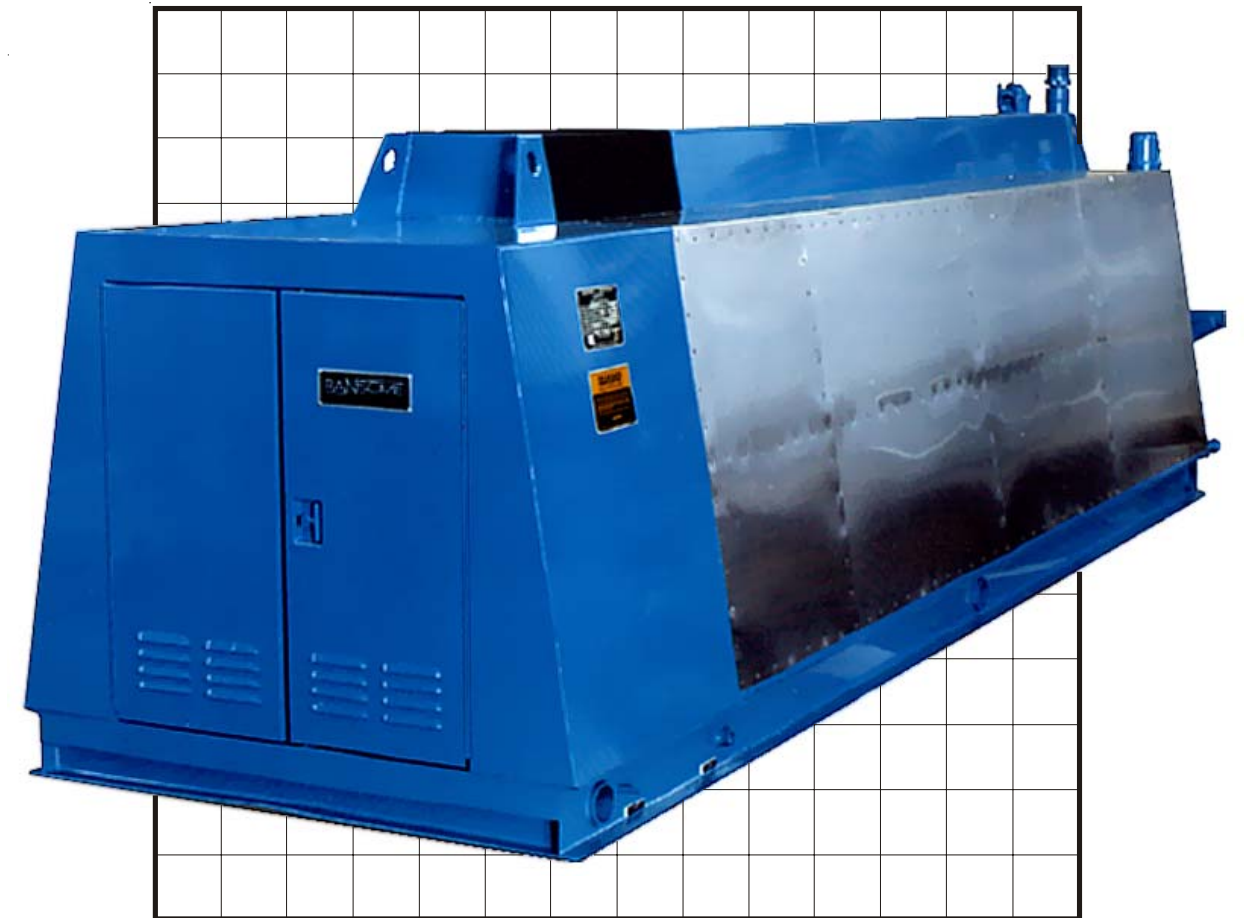
This warranty is expressly in lieu of all other warranties expressed or implied, and of all obligations or liabilities on its part for damages including but not limited to consequential damages, following the use or misuse of equipment sold by it. No agent is authorized to assume any liability for Ransome Manufacturing, except as set forth above.

# RANSOME

MANUFACTURING

LP-Gas Equipment Distribution and Manufacturing

## ID Series Water-Bath LP-Gas Vaporizers



**RANSOME**  
MANUFACTURING

3495 South Maple Avenue • Fresno, CA. 93725 • Phone (559) 485-0979 • Fax (559) 485-8869 • www.ransomemfg.com

## The ID Series Vaporizer

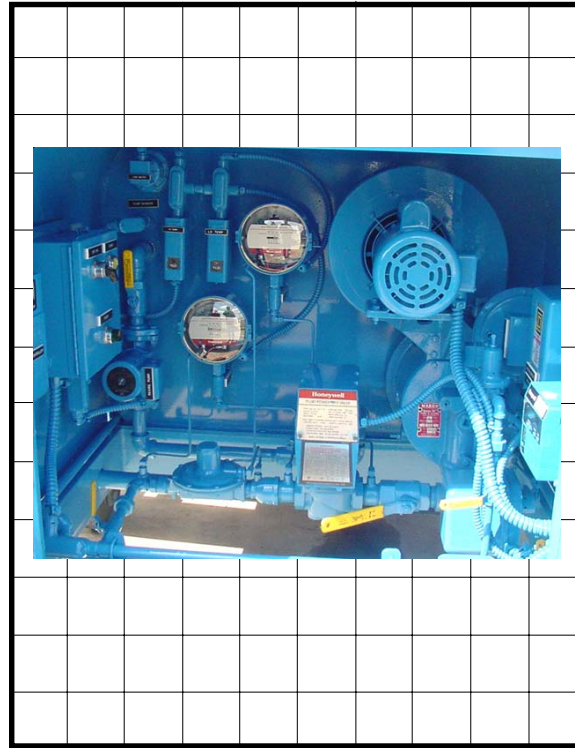
The industries most complete line of large-capacity LP-Gas Vaporizers combine safety and reliability. Ransome ID Series Vaporizers range in size from 500 to 10,000 gallons per hour propane capacity to produce the precise amount of vapor for your industrial or commercial LP-Gas requirement.

Ransome ID Series Vaporizers are ideally suited for lumber kilns, aggregate and gravel dryers, heat treating furnaces, industrial boilers and heating equipment, stand-by fuel systems, peak shaving plants, food drying and processing plants, and any operation requiring an uninterrupted, reliable supply of LP-Gas vapor. All models are fully automatic, designed for unattended use in all climates.

### Why an ID Vaporizer?

LP-Gas is stored as a liquid and used as a vapor. To change it into a vapor, heat must be added at the rate of: 785 BTU's for each gallon of propane, 808 BTU's for each gallon of butane. The liquid will then boil, changing to vapor at the rate of: 36.4 cubic feet for each gallon of propane, 31.3 cubic feet for each gallon of butane.

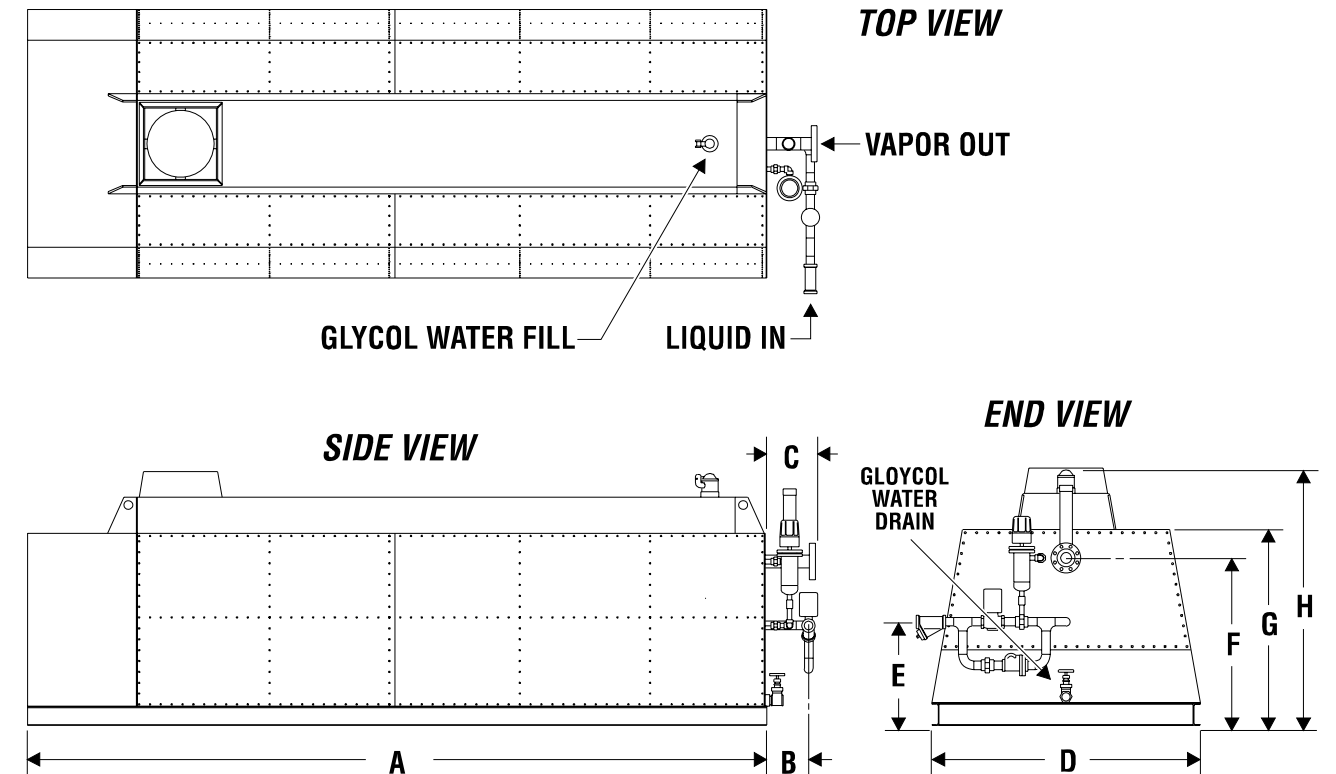
LP-Gas liquid is supplied to the inlet of the ID Vaporizer from a suitable source. The liquid enters a header connected to a series of heat exchanger tubes which run through a warm water bath. This heats the liquid and converts it into vapor. The vapor is collected in a header at the top of the tubes, where it is drawn off to supply the needs of the application. The water is kept warm by a power burner mounted in a large immersion tube passing through the bath.



**Factory  
Mutual  
System**

### Features

- Efficient propane combustion and consistent performance is maintained, since the power burner is substantially independent of weather conditions. Air is delivered to the combustion zone through the burner by a heavy-duty fan and is discharged through a diffuser specially designed to provide a firm flame anchor and stable, high-efficiency combustion. The resultant flame stability provides quiet operation, free from vibration, pulsation or flashback.
- A low, attractive silhouette is maintained in all sizes, since the power burner requires only a short stack and weather cap at the flue outlet. The neat rectangular housing is covered with stainless steel and blends well with any architectural setting.
- A continuous supply of dry, warm vapor is assured by providing additional heat exchange area over the amount required for rated capacity. The large water bath acts as a massive heat sink, eliminating the need to shut down while servicing power burner or controls.
- All critical components are protected from outside weather conditions to assure maximum reliability. These units are completely insulated for an economical operation.
- All models are built in accordance with Factory Mutual safety requirements.
- Standard units feature safety interlocks which initiate automatic shut down sequence of power burner and activate dry alarm contacts and light in the event of excessive or insufficient burner gas pressure, excessive bath temperature, low bath level or flame failure.
- Integral liquid level control system prevents LP-Gas liquid from entering vapor line.
- Units are shipped ready for use, requiring only electrical power supply and connection of liquid and vapor lines.



MODEL	DIMENSIONS, IN.								Approximate Shipping Weight LB.
	A	B	C	D	E	F	G	H	
ID500	117	10	12	48	20.25	37.25	44.25	52.25	4500
ID750	145	10	12	48	20.25	37.25	44.25	52.25	5800
ID1000	160	10	12	54	21.75	38.5	45.25	53.25	6450
ID1500	190	10	12	60	25	41	49.5	57.5	9200
ID2000	216	10	12	66	26.5	44	52	66	15000
ID2500	231	10	12	74	28.5	46.25	54	66	17000
ID3000	256	12	18	78	32	48	58	68	19500
ID4000	292	12	18	94	35	60	68	82	24000
ID5000	334	12	18	94	35	60	68	82	28000
ID6000	372	12	18	102	37	66	70	84	32000

MODEL	DIMENSIONS, CM.								Approximate Shipping Weight KG.
	A	B	C	D	E	F	G	H	
ID500	297	25	30	122	51	95	112	133	2041
ID750	368	25	30	122	51	95	112	133	2631
ID1000	406	25	30	137	55	98	115	135	2925
ID1500	483	25	30	152	64	104	126	146	4173
ID2000	549	25	30	168	67	112	132	168	6804
ID2500	587	25	30	188	72	117	137	168	7711
ID3000	650	30	30	198	81	122	147	173	8845
ID4000	742	30	46	239	89	152	173	208	10886
ID5000	848	30	46	239	89	152	173	208	12701
ID6000	945	30	46	259	94	168	178	213	14515

**NOTE:** Ransome reserves the right to change or alter this equipment at any time without notice to customer. All sizes are approximate, **NOT** to be used for engineering purposes.